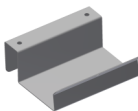


ASSEMBLY INSTRUCTION EPI Ei 90°

1



M8x25 x7



Optional power supply holder.

Hook the holder on the crossbar before fixing the stand to the top.

Wiggle the leg when mounting the crossbars. It makes it easier to mount the screws.

M8x25

Leave one of these screws unmounted in the crossbar for connection.

2



M8x16x7  
Black - Side support



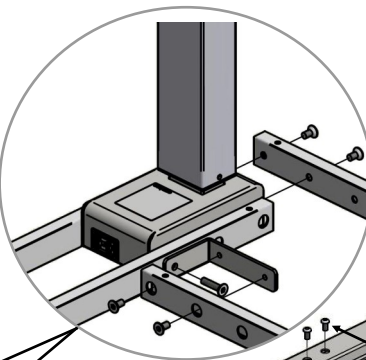
M8x16x7



M8x35 x1  
Use for connection  
3-Legs 90°



M8x25 x4



Use 4pcs  
M8x16 and 1  
M8x35 to  
mount the  
connection  
and crossbar.

M8x16

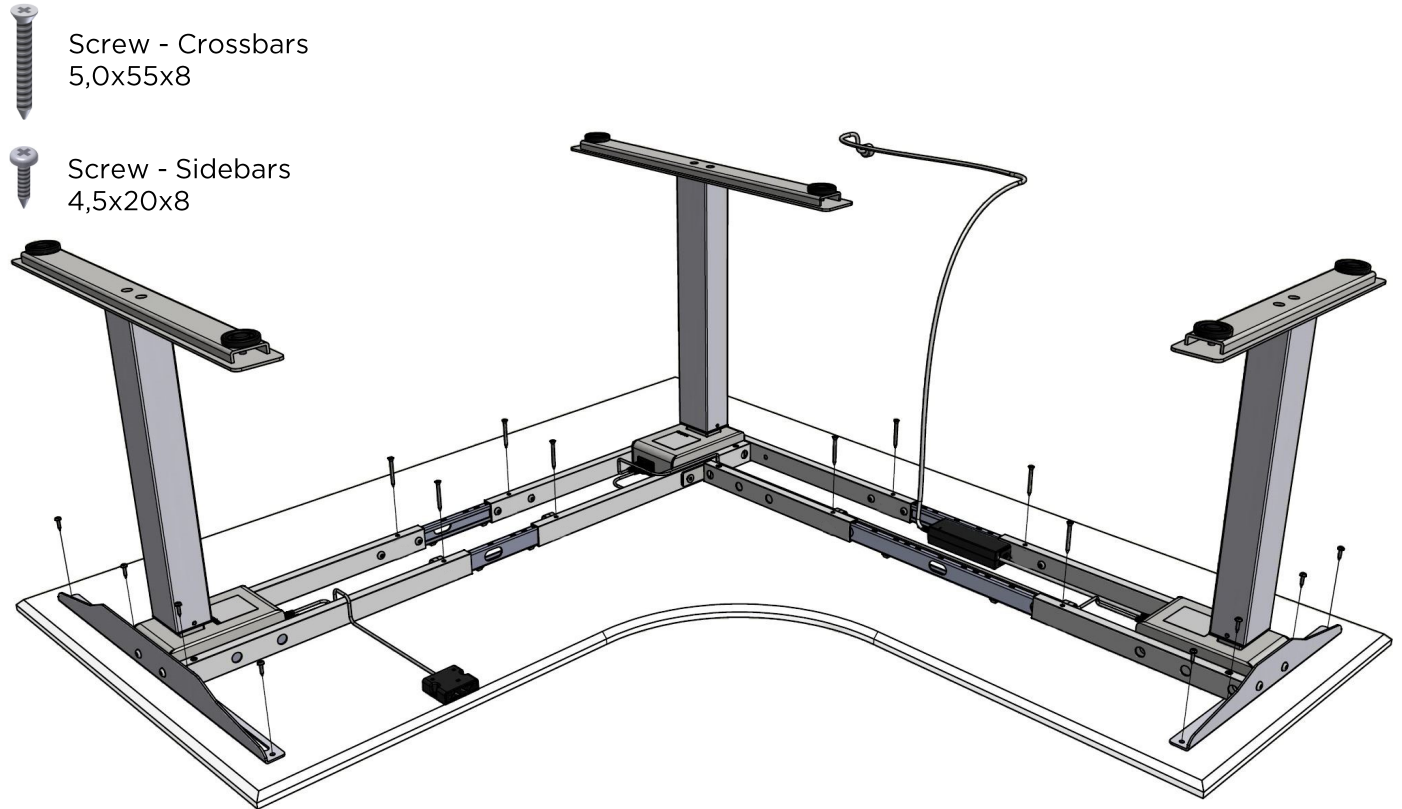
M8x25

Note that there are two different fixing kits for mounting the table top. Only one is supplied depending on the chosen version of table top attachment.

3.1

## Version 1 — Fixed table top (version delivered)

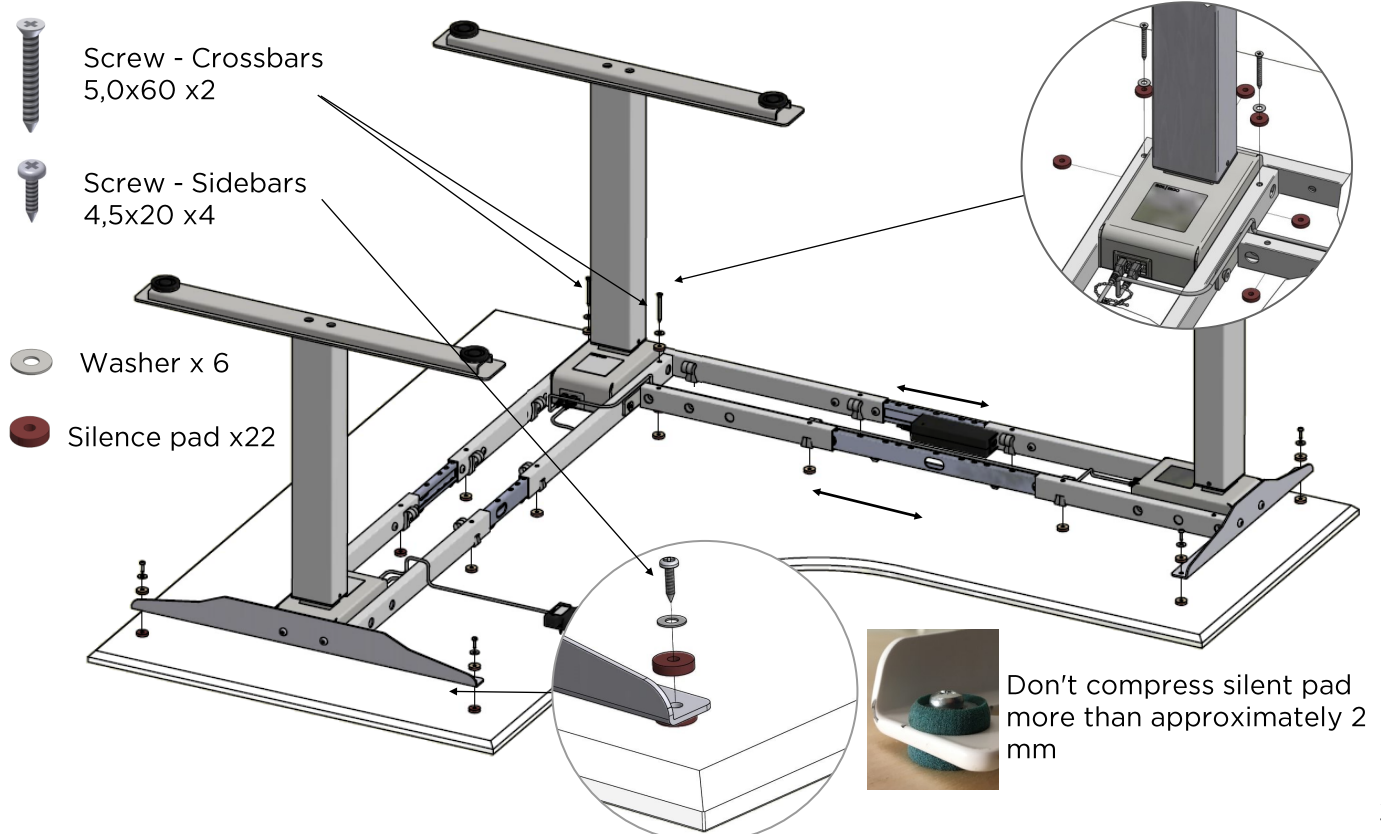
Loosen screws in crossbars and adjust stand width symmetric to wished position.



## Version 2 — Silent table top

3.2

Loosen screws in crossbars and adjust stand width symmetric to wished position.

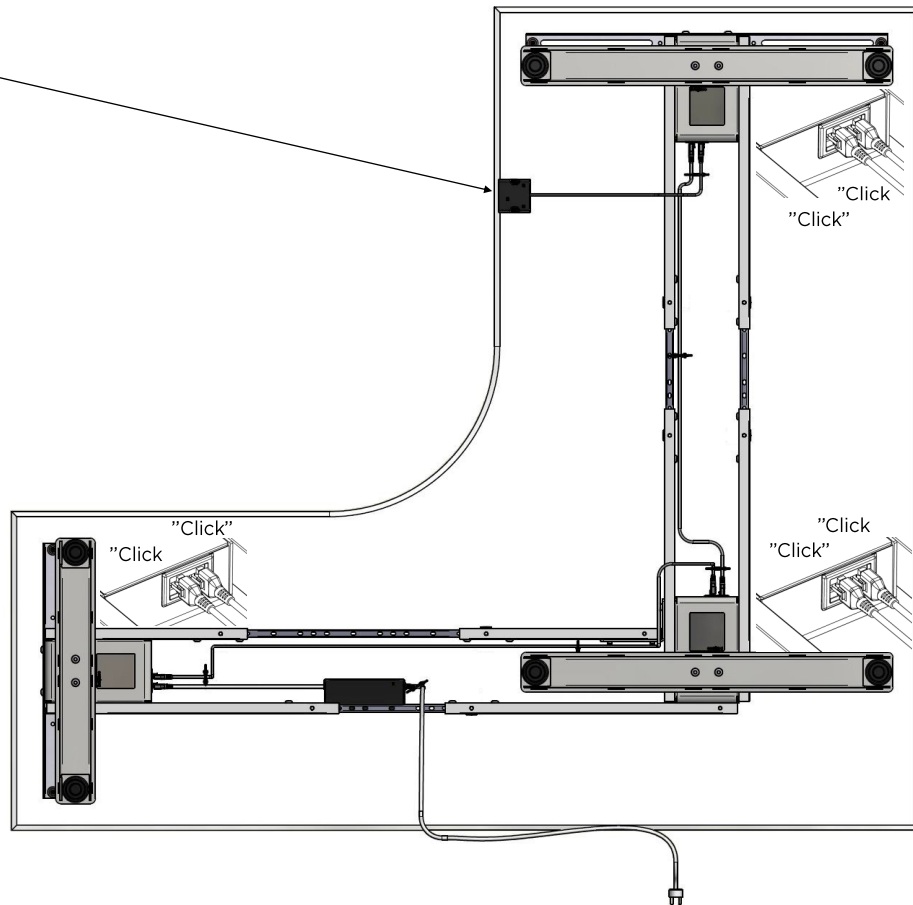


## ASSEMBLY INSTRUCTION EPI Ei 90°

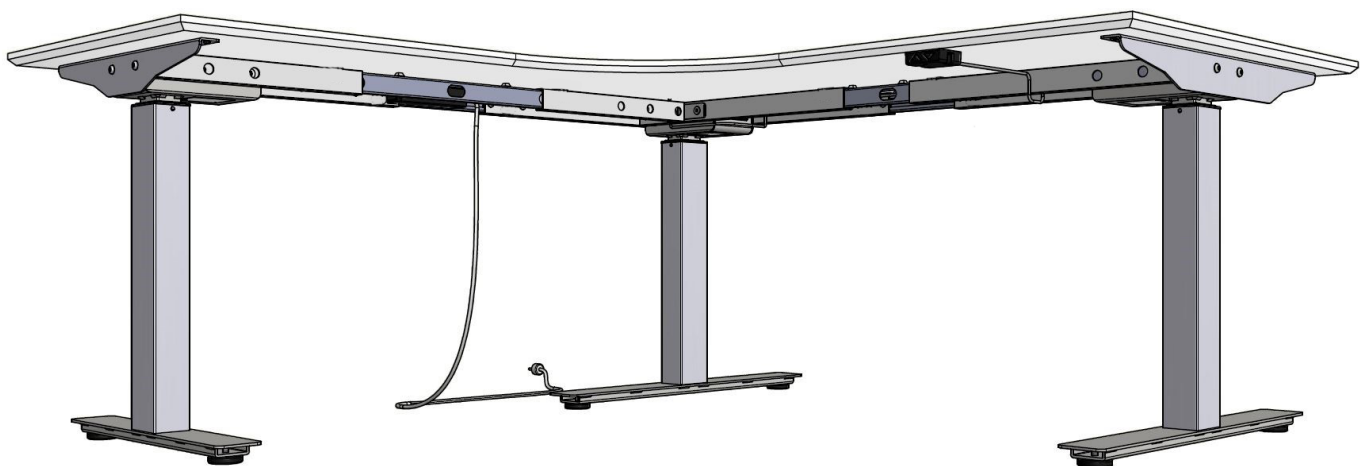
Use the hooks to structure excess cabling under the table top.



3,5x16 x2 + Handset



4



5

Observe: Make sure every screw is tightened before use.

Turn the table around to standing position and plug the cable.

Ready to use!

