

ASSEMBLY INSTRUCTION FLUSH TABLE TOP EPI ECS+

Note that this assembly instruction is illustrated using generic parts. Thus, the visual impression of the parts can vary but the basic configuration is the same. Different versions of fixing kits may also be presented. Please follow the instruction corresponding to your order.

1

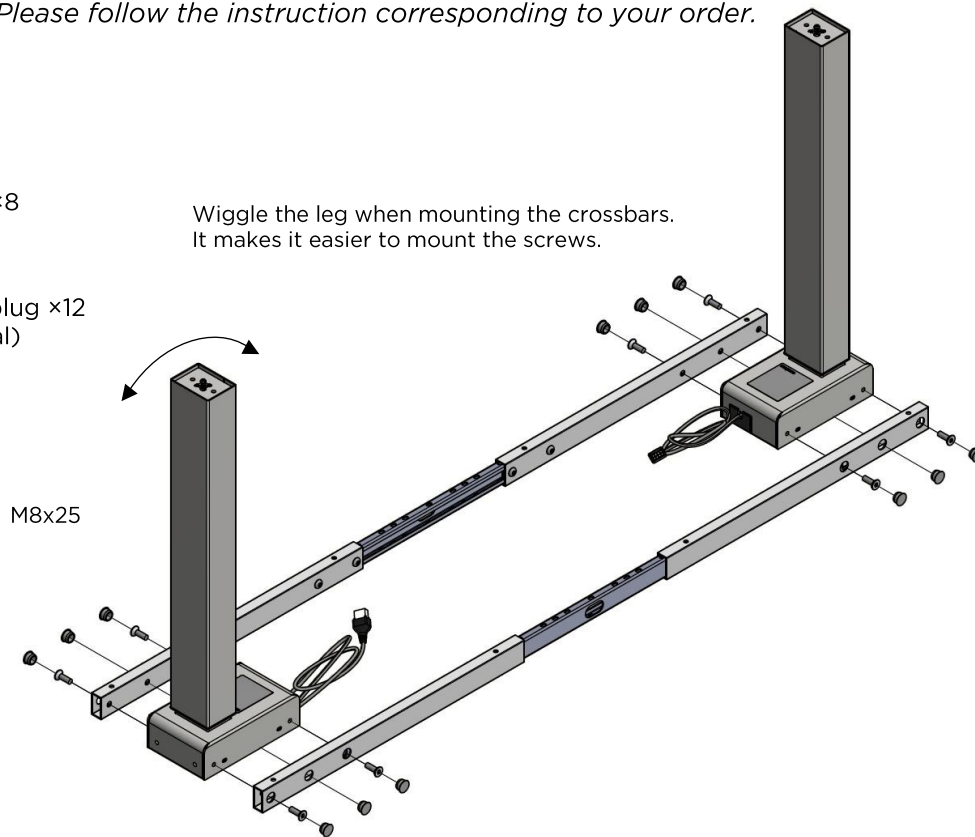


M8x25 x8



Plastic plug x12 (optional)

Wiggle the leg when mounting the crossbars. It makes it easier to mount the screws.



2



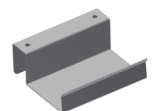
M8x16 x4 (Feet)



M8x16 x4 (Sidebars, countersunk)

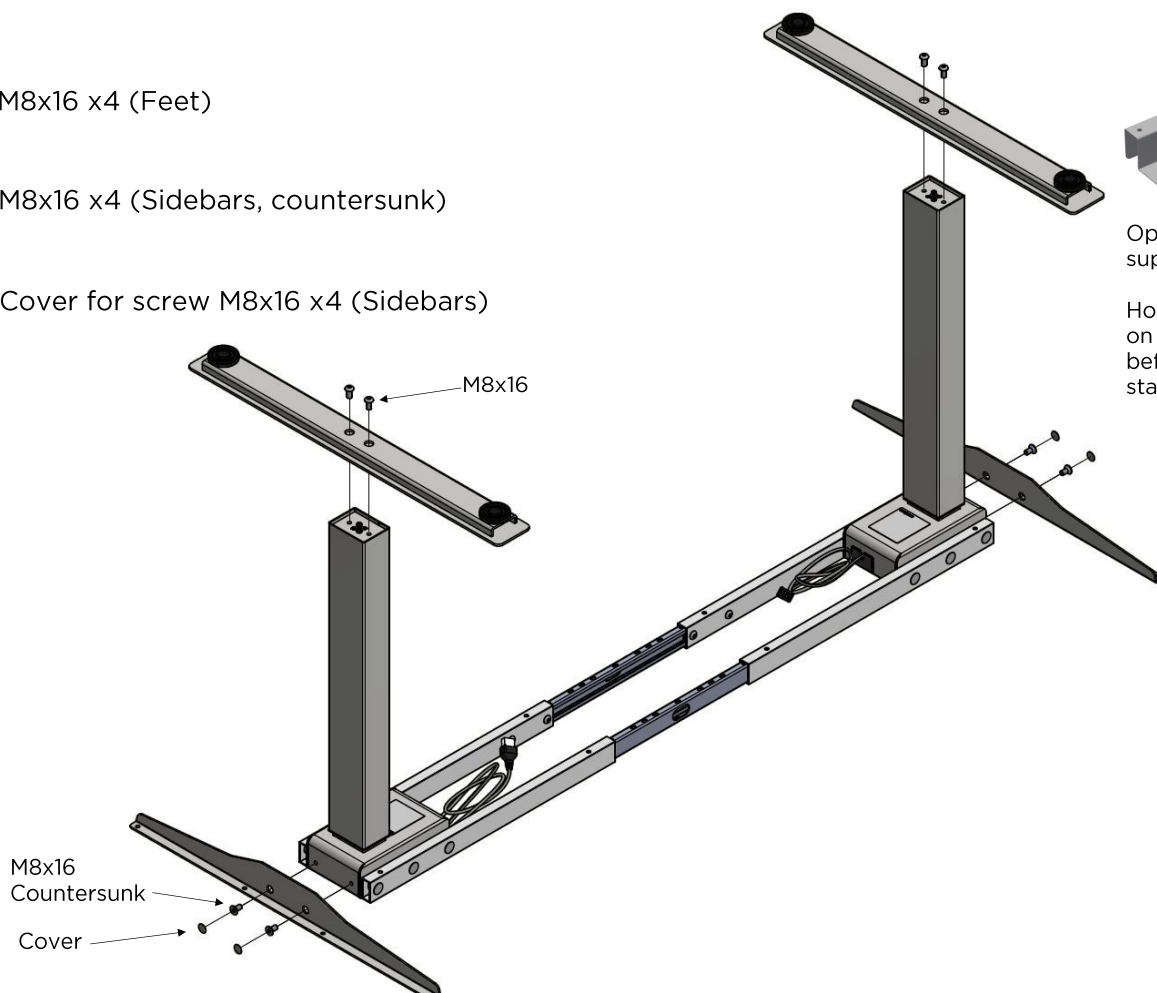


Cover for screw M8x16 x4 (Sidebars)



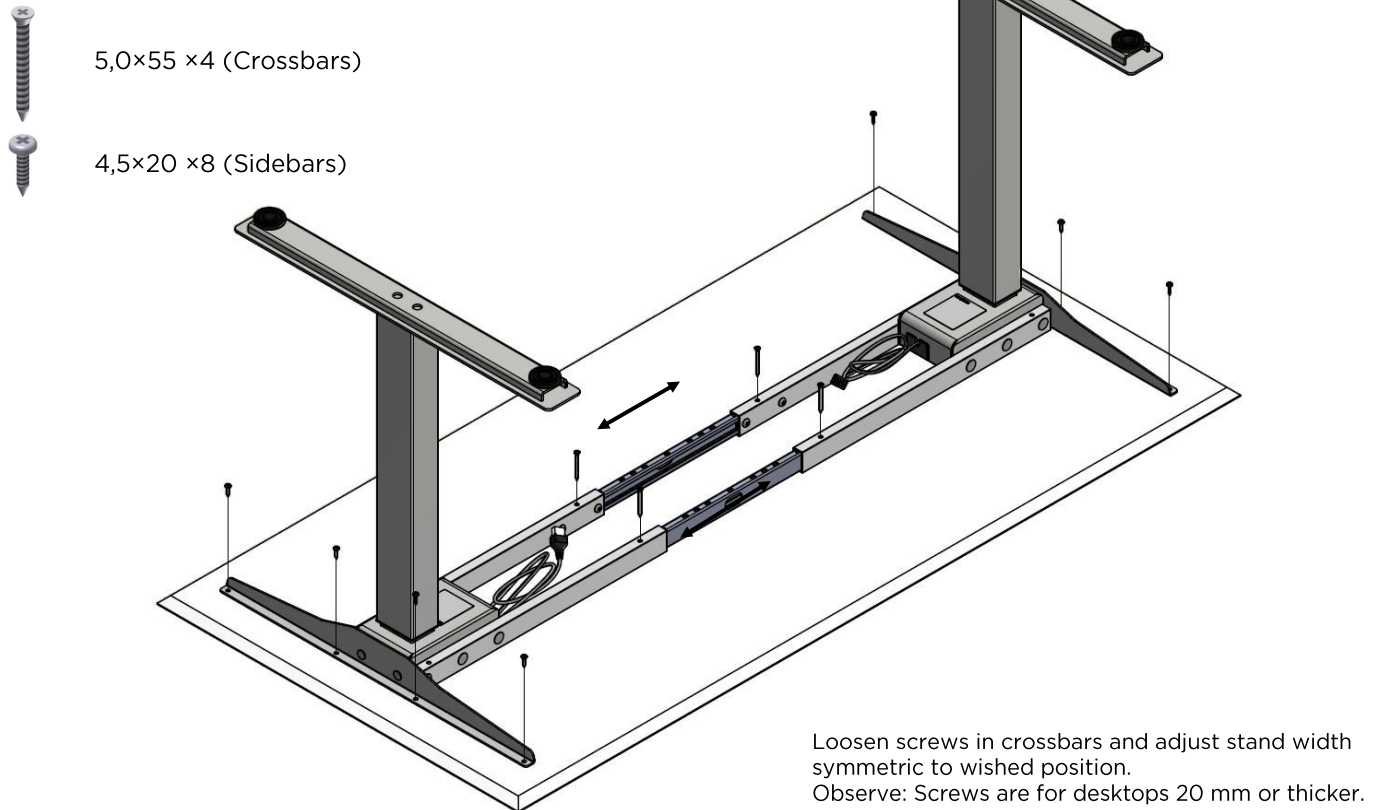
Optional power supply holder.

Hook the holder on the crossbar before fixing the stand to the top.



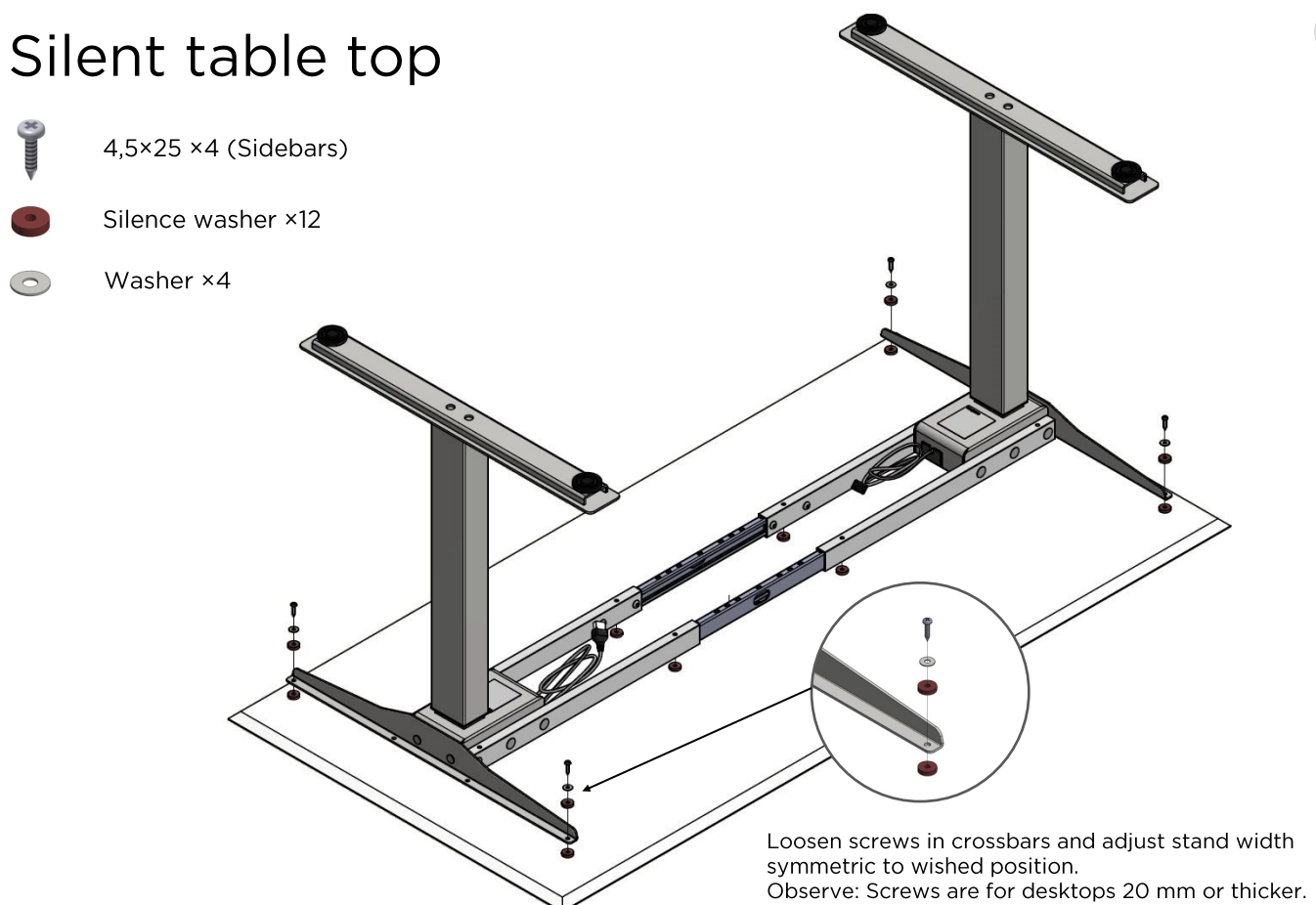
Fixed table top (version delivered)

3.1



Silent table top

3.2



Sliding table top

3.3



Plastic knob M6 Ø22 x1



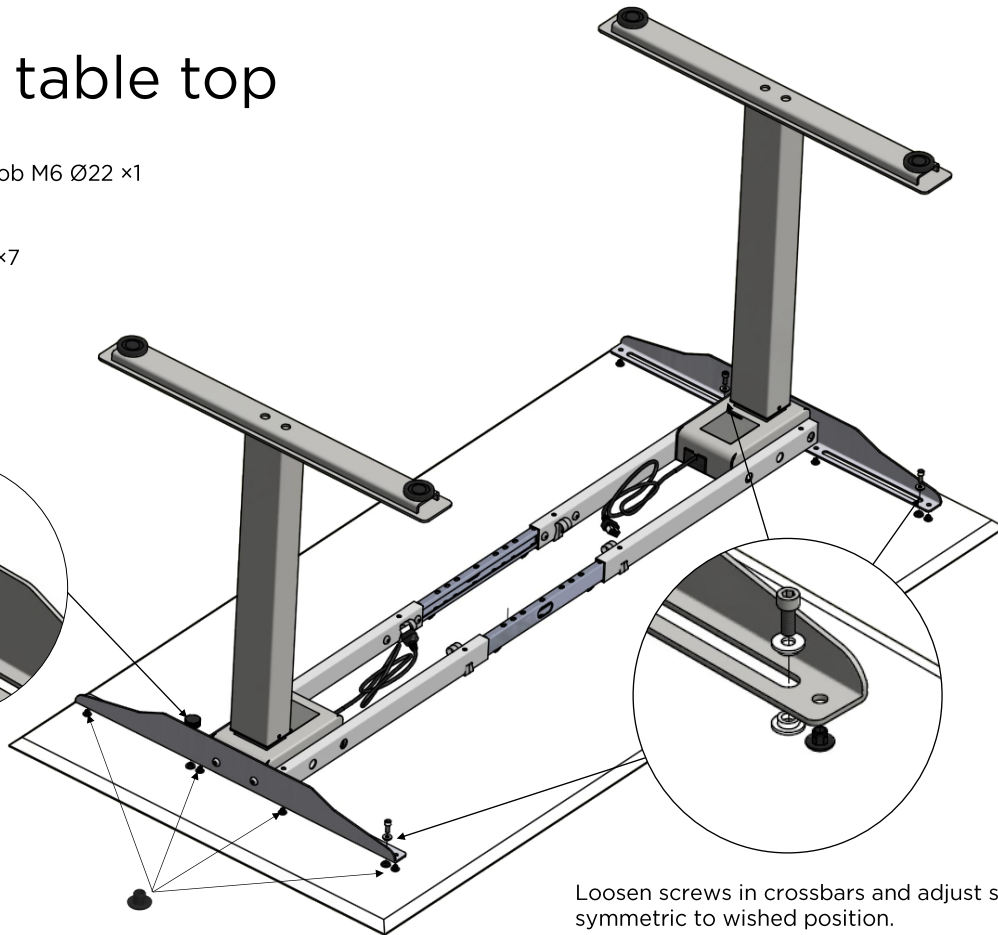
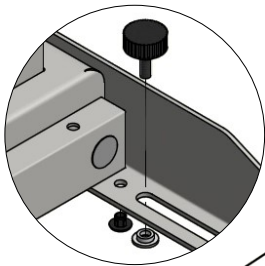
Distance x7



Glide x8



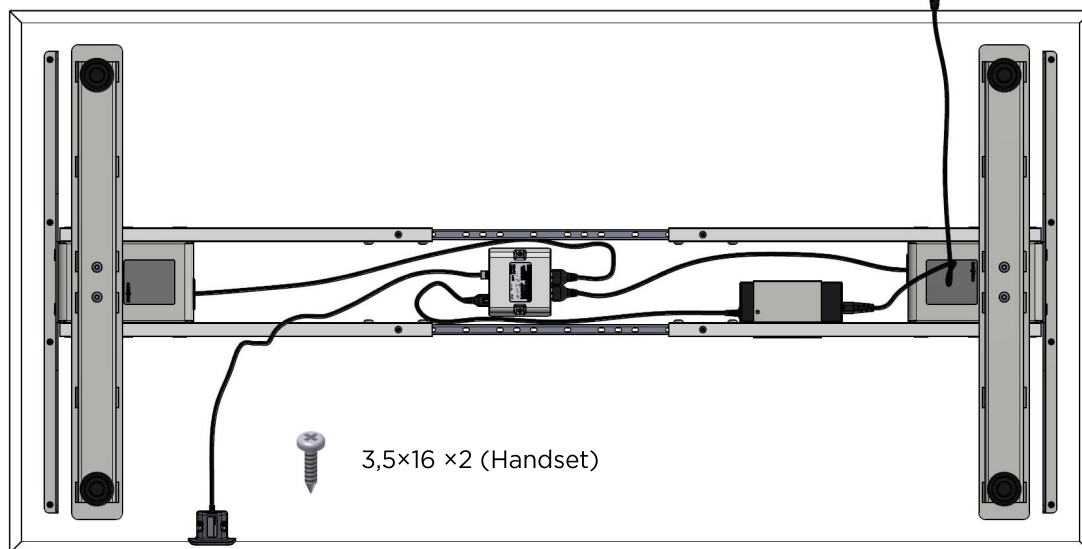
M6x16 x3



Loosen screws in crossbars and adjust stand width symmetric to wished position.
Observe: Drilled and threaded holes in tabletop needed

Structure excess cabling under the table top.

Note that the power supply cable end may vary (A or B).
Connect the provided power supply to the corresponding outlet.



Turn the table around to standing position and plug the cable in.

Ready to use!

